

# Technical specifications: TM-21



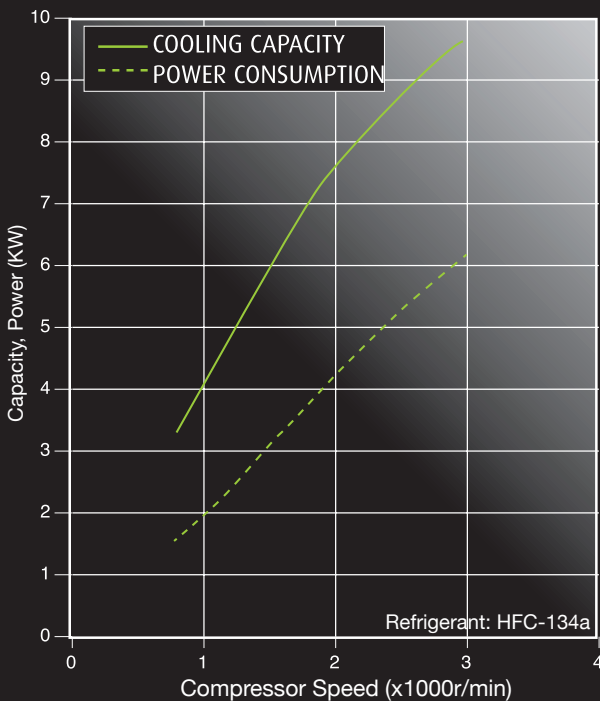
Heavy duty compressor  
 -High durability  
 -Smooth operation & high efficiency  
 -Compact packaging & light weight



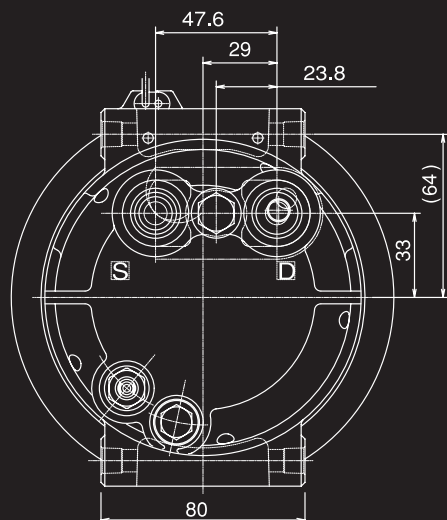
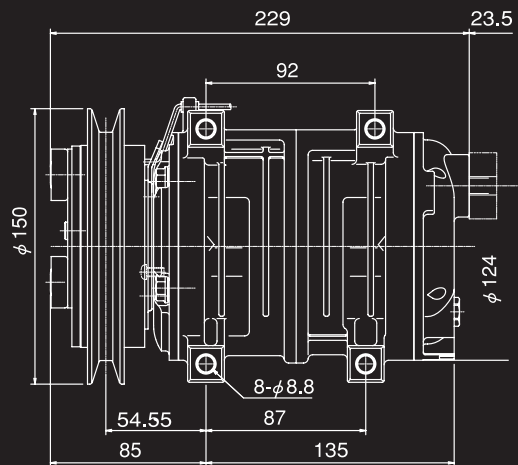
www.valeocompressors.com

MODEL	TM-21
DISPLACEMENT	215cm <sup>3</sup> /rev.
NUMBER OF CYLINDERS	10
RANGE	700-6000
REFRIGERANT	HFC-134a
OIL	ZXL 100PG 180cm <sup>3</sup>
WEIGHT	8.1Kg (with clutch)
MOUNT	Direct

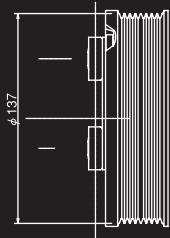
## PERFORMANCE CURVES: TM-21HD



TEST CONDITIONS  
 Discharge pressure: 1.52MPa (gage)  
 Suction pressure : 0.18MPa (gage)  
 Sub cool :5°C Super heat : 10°C



## MAGNETIC CLUTCH VARIATIONS

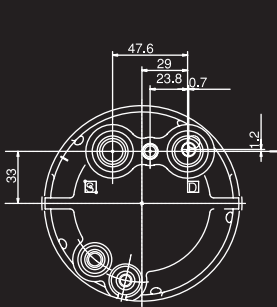


137-8PK

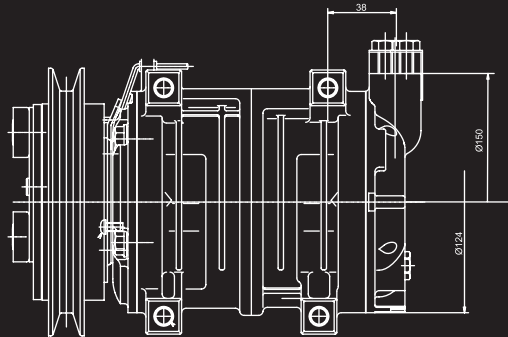


150-1BG

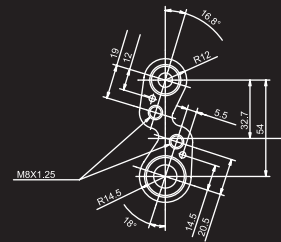
## CYLINDER HEAD VARIATIONS



GM-PAD TYPE

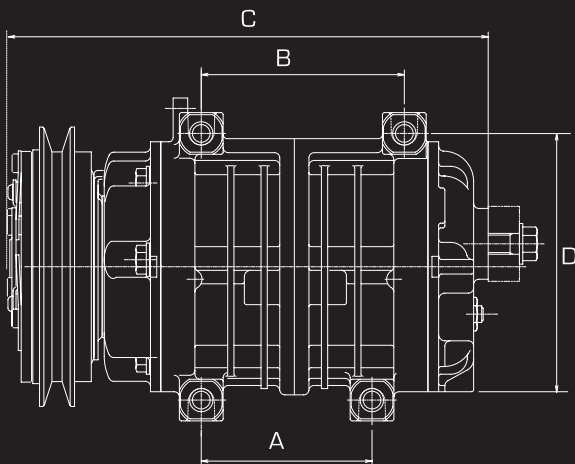


VERTICAL FLANGE TYPE CONNECTOR



## MOUNTING

### DIRECT



	A	B	C	D
<b>TM-21A (DM)</b>	87mm	92 mm	232 mm	128 mm